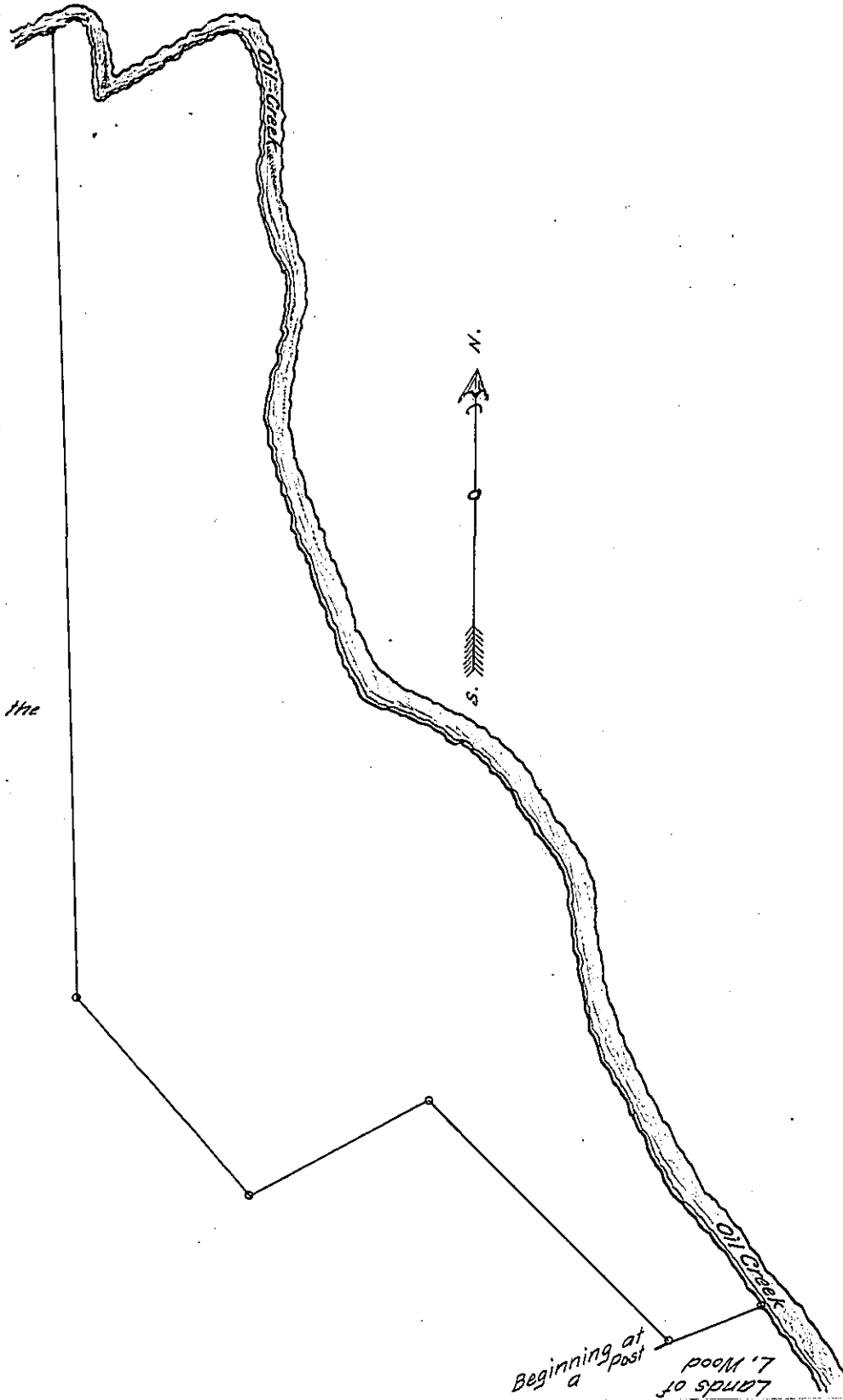


By Lands
of Newton
Winton on the
West



Courses & distances in
Perches & tenths Beginning
at a Post in the Southwest
Corner, thence.

- Stat Courses dist
- 1 N 67° E 13. -
 - 2 N 40° W 20. -
 - 3 N 26 3/4° W 22. 7
 - 4 N 8 1/2° W 18. 8
 - 5 N 38. W 18. 4
 - 6 N 64° W 18. -
 - 7 N 19° W 35. -
 - 8 N 11 3/4° E 18. -
 - 9 N 26° W 10. -
 - 10 N 2 1/2° E 15. -
 - 11 N 21 1/4° W. 9. -
 - 12 S 58° W 22. -
 - 13 N 3 1/2° W 11. -
 - 14 S 69 1/2° W 4. 6
 - 15 S 17 1/2° E 119. 4
 - 16 S 43° E 33. 1
 - 17 N 63° E 25. 3
 - 18 S 45 3/4° E 43. 3. -
- To place of Beginning

Surveyed in pursuance of the actual Settlement and improvement of Samuel Winton on the
first day of February A.D. 1865. - the above described tract or piece of Land Situate
in Rome township Crawford County Containing thirty three acres and twenty seven
perches and allowance of 6. pr Cent &c

James Tryon
County Surveyor for Crawford County

IN TESTIMONY that the above is a copy of the original remaining on file in the Department of
Internal Affairs of Pennsylvania, made conformably to an Act of Assembly
approved the 16th day of February, 1833, I have hereunto set my Hand
and caused the Seal of said Department to be affixed at Harrisburg, this
twenty seventh day of July 1908.

Henry Houck
Secretary of Internal Affairs.